



HIGHEST SIGNAL PURITY and Quality on the market



POWERFUL PERFORMANCE

- RDS2 Ready
- MPX over AES removes the last analog link from the chain
- High quality and spectral purity
- Built-in FM tuner (standard in US version)



POWERFUL CONTROL

- ScriptEasy & Masterview Apps
- SNMP Management
- UECP Control
- Responsive webdesign
- PS and RT delay by one second increment

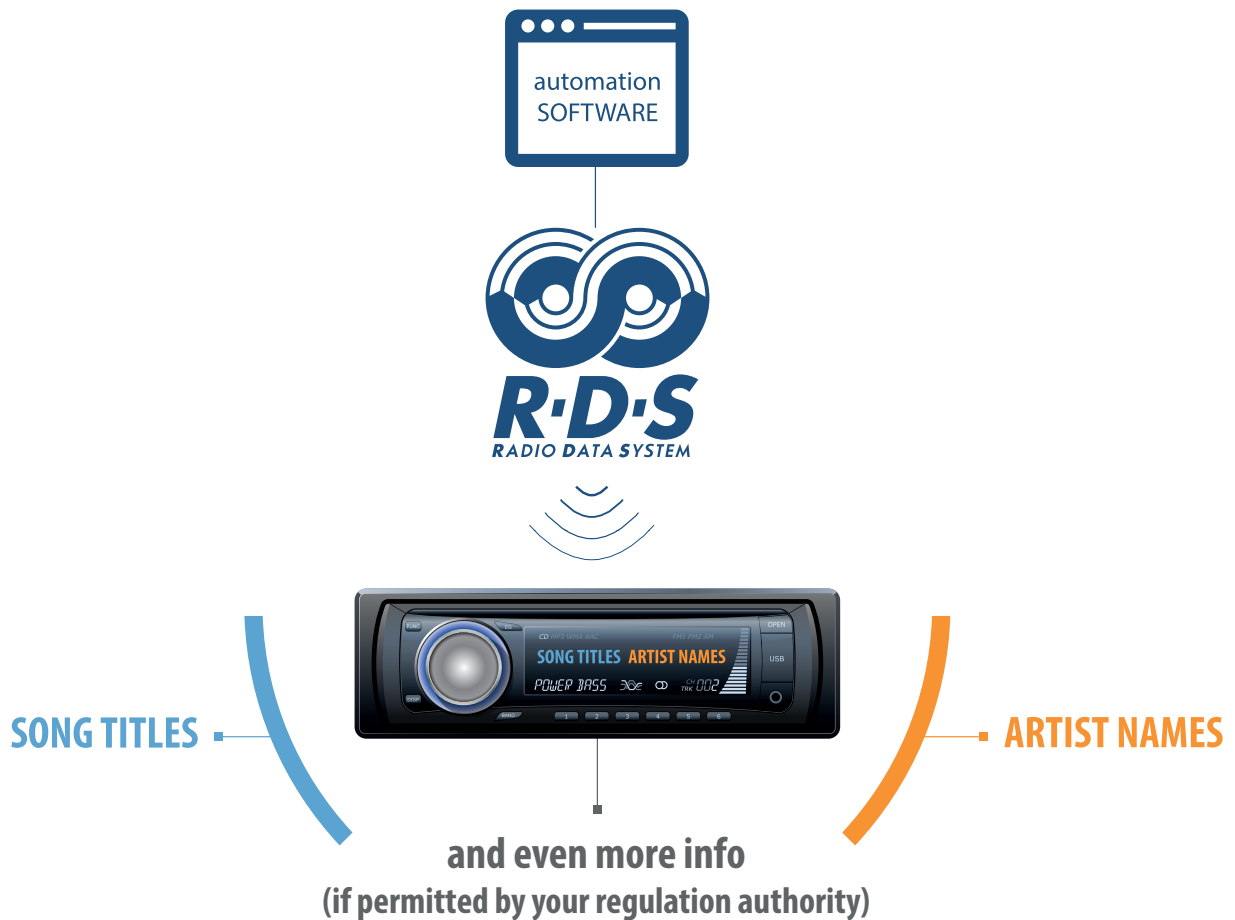


POWERFUL SAVINGS

- Future-proof platform
- Digital migration at no cost
- ODA capability

List of applications

- 1 Can be easily connected to your automation software for automatic display of song titles, artist names and much more on receivers (if permitted by your regulation authority).
- 2 AUDEMAT RDS ENCODER is fully compliant with the RDS/RBDS standards, support all groups and features of the standards and offer TCP/IP connectivity.
- 3 The AUDEMAT RDS ENCODER may be controlled through a responsive website.



WorldCast MANAGER

CONNECT WITH WORLDCAST MANAGER

The WorldCast Manager simplifies the management of all SNMP-enabled devices in a network, providing real-time status, historical data and visualization of multiple devices from a single screen. The intuitive and simple-to-use interface shows all devices located at your site(s) displaying product information, alerting you to any alarms and providing one-click access to the unit's web-based control interface.

The WorldCast Manager is compatible with all WorldCast Systems' equipment as well as SNMP devices from ANY manufacturer.



WORLDCAST
CONNECT
Enabling broader business

Build, save & share insightful reports

Key Features

FEATURES



Identify the station



Automatically retune between transmitters of the same program

TITLE : Traviata
ARTIST: Verdi

Display song titles and artist information on receivers



Traffic Announcements



Interactive radio (RT+)

ODA

Future Applications (ODA application)

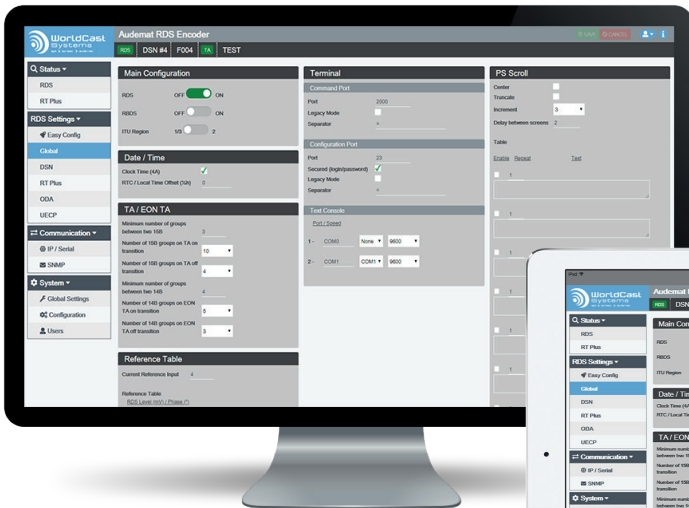


Traffic message channel

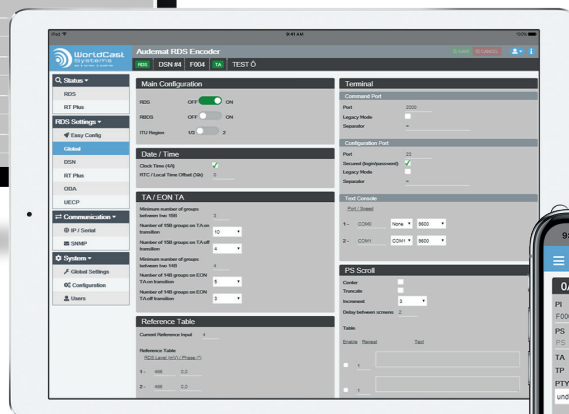


Emergency Warning System

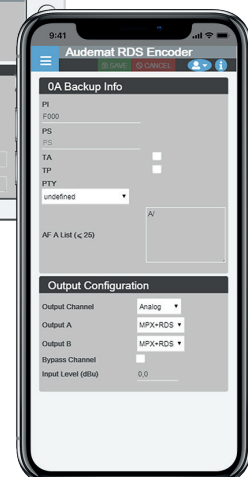
RESPONSIVE WEBSITE



RDS setting interface



Global setting interface



Input / Output management interface

Technical Features



RDS FEATURES

Group supported	From 0A to 15A
Group sequence	Configurable
EON	10 PSN
PS	10 PSN
PTY	10 PSN
PI	10 PSN
PTY	Yes RDS/RDBS
AF	Yes method A and B
TP/TA	Yes by command or contact closure
PTYN	Yes
CT	Yes - NTP sync
ODA	Yes
TMC	Yes
Side Chain Mode, Loop through mode, Bypass feature	Yes by software
RDS2 Ready	Yes

RADIOTEXT

Radiotext	8 messages
RT+	Yes

SCROLLING PS

Dynamic PS	Yes
Sequencing speed	Adjustable in sec
Scrolling by character	Yes from 1 up to 8
Scrolling by word, 8 character block, automatic centering, truncate	Yes
Repeating, Labeling, Delay before display	Yes

COMMUNICATION

Scheduler	ScriptEasy & MasterView
GUI	Embedded web server with responsive design website
History log	Yes
Connection with automation software	Yes with RS232 or TCP/IP
Remote display	Yes
ASCII protocol	Yes
UECP standard	Yes

HARDWARE

Inputs/Outputs	16 inputs + 8 relays
Communication	1 RJ45 + 2 RS232 + 1 µUSB
Communication Protocol	Telnet SSH FTP
MPX over AES	Yes
Synchro. Monitoring	Yes
Tuner FM	Yes
Front panel display	Yes
Integrated RDS Decoder	Yes

Technical specification are subject to change without prior notice – 11/2018

PHYSICAL SPECIFICATIONS

External Dimensions (W / L / H)	483mm (19") x 180mm x 1U
Weight	2.35 kg
Power supply voltage	125 / 250V
Power supply frequency	50-60 Hz
Power consumption	50VA
Temperatures Storage temperatures	0°C to 50 °C / 32°F to 122°F -30°C to 80°C / -22°F to 176°F
Humidity	10-95% non condensing relative humidity

Order information

STANDARD VERSION

REF	DESCRIPTION
TF01070	AUDEMAT RDS ENCODER

Head Office

WorldCast Systems S.A.S
20 avenue Neil Armstrong
33700 Mérignac (Bordeaux Métropole) FRANCE
+33 (0)5 57 928 928
contact@worldcastsystems.com

WorldCast Systems Inc

19595 NE 10th Avenue Suite A
Miami
FL 33179 USA
+1 305 249 3110
ussales@worldcastsystems.com