



## Remote Control & Facility Management

Smart, compact and affordable



### POWERFUL PERFORMANCE

- Powered by ScriptEasy, the smartest graphical tool for remote control
- Monitoring and Alarm Control of equipment installed at remote sites
- Enables automatic actions to be triggered on defined events, statuses or combination of these



### POWERFUL CONTROL

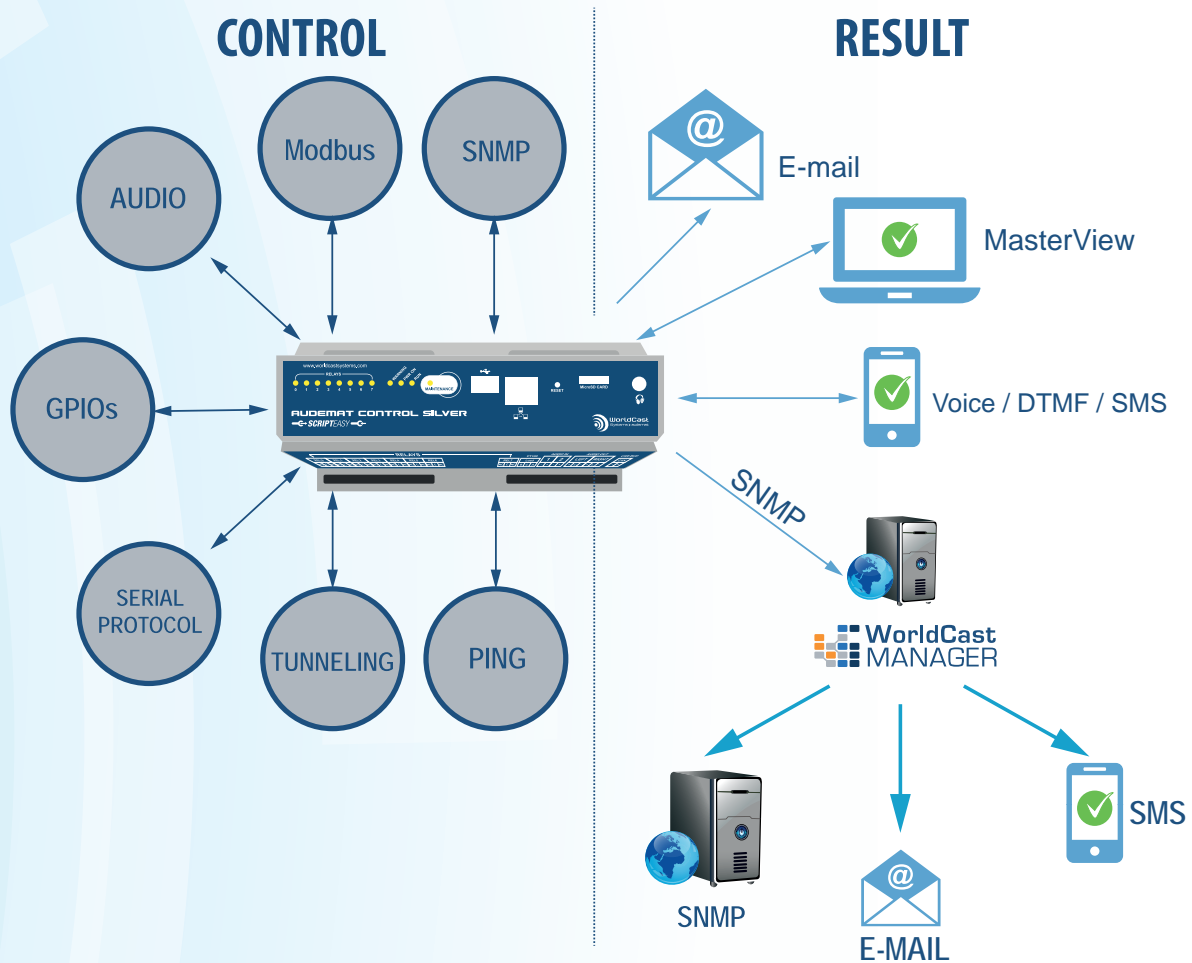
- Flexible and customizable alarms and notifications
- Access the site from anywhere via an embedded web server
- MasterView enables creation of customized views for easy understanding



### POWERFUL SAVINGS

- 24/7 vigilance and action to protect your investment
- Compact and light, the AUDEMAT CONTROL Silver can fit anywhere (DIN rail mountable)
- Audio presence detection and backup for transmitter sites prevents off-air disasters

## Overview



## Applications

### Connect to external equipment for data access

- **Via hard wired inputs / outputs (relays, audio inputs, analog or digital inputs):**  
*Status, metering data, commands and automatic actions*
- **Via USB<->RS232 or USB<->RS485 adapter:**  
*IP Tunnelling for remote access to the terminal interface of external equipment*  
*SCRIPTEASY Driver: integration of specific serial protocols for automatic monitoring*
- **Via Ethernet ports:**  
*Management of external equipment via SNMP*

### Remote diagnostic, monitoring, maintenance

- Continuous monitoring and logging of status, values or levels
- Triggering of automatic actions on out of tolerance conditions or on set schedules
- Notifications on occurrence of specific conditions

### Transmitter management

- Detection of failure and control of backup transmitters
- Double drive management
- Triggering of automatic or manual actions using inputs / outputs and script from ScriptEasy

### Audio backup

- Audio backup managed with ScriptEasy script to provide failover option upon loss of audio at the transmitter site

# Key Features

The **AUDEMAT CONTROL Silver** is a remote control and data acquisition system designed to allow local and remote monitoring and control of all types of equipment.

In one compact box, it delivers all the key elements for efficient site management: automation, fault notifications, telecommunications and graphic overview.

Using the ScriptEasy software suite, configuration is **quick** and easy.

Combining WorldCast Systems' knowledge and experience with the advanced functions and capabilities of the unit (RS232/485 drivers, Audio Backup, ModBus, Scripting, SNMP management) enables us to offer a turnkey solution to exactly meet your site's requirements

## FEATURES

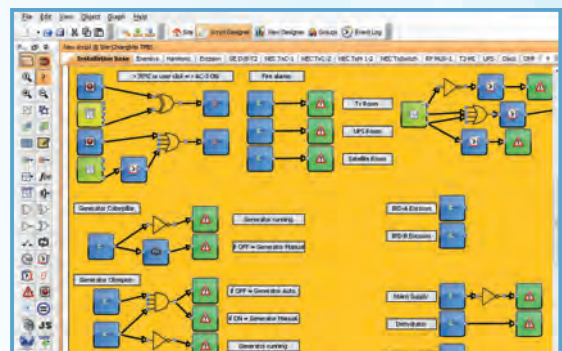
- HTTP or HTTPS secured access for views and commands
- User rights management allowing access in admin, guest or maintenance mode
- Maintenance mode to avoid alarms during technician operations
- ScriptEasy software for configuration and remote administration
- MasterView (web pages or application) for customized end-user views of data and control
- Notifications via Email, SNMP and optionally SMS and Voice/DTMF Phone Alert calls
- Monitoring of up to 2 SNMP third party devices by default (12 as an option)

## SCRIPTING

- Graphical script and view(s) creation with drag and drop method
- Logic gates, mathematical functions, timers, schedulers, pulses, counters, cycles, ping, push and press buttons, ...
- Drawing tools and comments to help organize the script
- Drawing tools, text and image insertions to help create user-friendly customized view(s)
- Advanced functions: tunneling, SNMP commands (SET, GET, GETBULK), SNMP trap reception
- Drivers and API (Application Protocol Interface) allowing management of specific dialogs with third party devices via serial connection (optional RS232 or RS485 adapter)
- Script operations can be simulated locally, modified, saved and restored or copied from one unit to another

## SCRIPT EASY

ScriptEasy is a powerful graphical software application that makes it easy and intuitive to configure and control the most complex and challenging of installations. The flowthrough design and simple user interface, combined with powerful tools like the Scheduler and Advanced Programming Interface, mean that facility control devices operating with ScriptEasy have the power to control and communicate with a large number of remote control units, while remaining accessible and simple to put in place and use.



ScriptEasy

## MASTerview

With MasterView you can display data and control equipment in multiple custom views. Each view can contain as much information from the remote site as desired. MasterView is also available as a web application. Views are created using a standard web browser and viewed from any PC or mobile device.



MasterView-Remote Customised view(s)



See more about  
CONTROL SILVER

# Technical Features

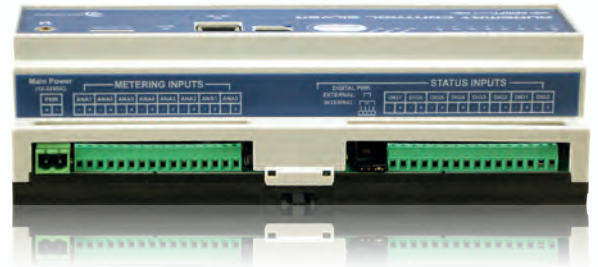
## Technical specification

Type of interfaces	Number
Metering (analog inputs)	8
Status (digital inputs)	8
Commands (relay outputs)	8
Audio output	1 (stereo)
Audio Input	2
PT100 input	1
CAN bus	1
LAN port	1 (100 Mb/s)
USB port	1
microSD card	1 (2 Gb)
LED indicators	4 + relays
TCP-IP Protocol	SMTP, HTTP, FTP, SNMP, NTP, PPP...
Headphone jack (3.5 mm)	1
I/O Specification	
Metering (analog inputs)	12-bit -50 V/+50 V (4 ranges)
Status (digital inputs)	5-25 VDC external or closure contact
Commands (relay outputs)	1A @ 50VDC per relay - SPDT
Technical characteristics	
Processor	400 MHz, 32 bits
RAM	128 Mb

Technical specification is subject to change without prior notice – 10/2017

## Physical specification

External Dimensions	210 x 90 x 60 mm (Din rail format)
Weight	~ 300 g
Main Power Supply	12-24 V external (option)
Power Consumption	< 10 W (5 W typical)
Operating Temperatures	0°C to +60° C
Storage Temperatures	-20°C to +70° C
Fuse	Resettable fuse PTC
Humidity	10-95% non-condensing relative humidity



## Order information

Standard Version	
REF	DESCRIPTION
TF00350-D0	AUDEMAT CONTROL Silver (AC Power adapter as option)
Option	
TF00165-C0	Phone Alert Option incl. Voice modem

### Head Office WorldCast Systems S.A.S

📍 20 avenue Neil Armstrong  
33700 Mérignac (Bordeaux Métropole) FRANCE  
☎ +33 (0)5 57 928 928  
✉ [contact@worldcastsystems.com](mailto:contact@worldcastsystems.com)

### WorldCast Systems Inc

📍 19595 NE 10th Avenue Suite A  
Miami, FL 33179 USA  
☎ +1 305 249 3110  
✉ [ussales@worldcastsystems.com](mailto:ussales@worldcastsystems.com)