

LM7500 SERIES SD/HD/3G Monitors

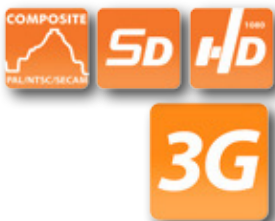
LM7500 SERIES
Preview Monitors

7500 Series: you'll never do so much with so little



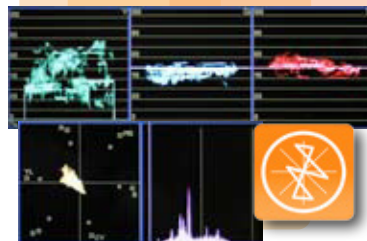
The 7500 series from KROMA, with monitor kits of 9", 7", 5" and 4", includes new features like the possibility of displaying 3G signals, tools for camera calibration, and other improved functions; it is indeed the right choice for HD/3G OB Vans, sports productions and in general, whenever several signals must be monitored in a space constraint facility.

MAIN NEW FEATURES



The monitors include independent analogue and digital inputs for each screen, with optional compatibility with 3G-SDI.

The two composite inputs may be turned into an input-output by menu. The digital inputs include an active loop-through (in models with 2 inputs, the output is the signal on screen).



New tools have been included to assist in the signal monitoring, such as independent waveforms for Y, Cb and Cr and vectorscope, displayed in different colours for a quick identification of each tool.

Please check the following chart for the different models available:

Model	Screens	Inches	PAL Inputs*	SDI Inputs**	3G
LM7509A11	2	9	2	2	-
LM7509A11G1	2	9	2	1	Yes
LM7509A11G2	2	9	2	2	Yes
LM7507A11	2	7	2	2	-
LM7507A11G1	2	7	2	1	Yes
LM7507A11G2	2	7	2	2	Yes
LM7505A11	3	5	2	2	-
LM7505A11G1	3	5	2	1	Yes
LM7505A11G2	3	5	2	2	Yes
LM7504A11	4	4	2	2	-
LM7504A11G1	4	4	2	1	Yes
LM7504A11G2	4	4	2	2	Yes

* 2 inputs configurable by menu as input-output

**With 1 active loop-through



Audio monitoring is possible thanks to the built-in audio de-embedder and the front headphones output. The on-screen audio bars, with configurable size and blending levels, can display up to 16 channels scaled in dBFS.

OTHER FEATURES



The high resolution In-Monitor Displays (IMD), can be static (and thus manually set) or dynamic (via TSL protocol). The tally info (on screen or lamp) can be received via serial TSL protocol, or by contact closure or voltage.



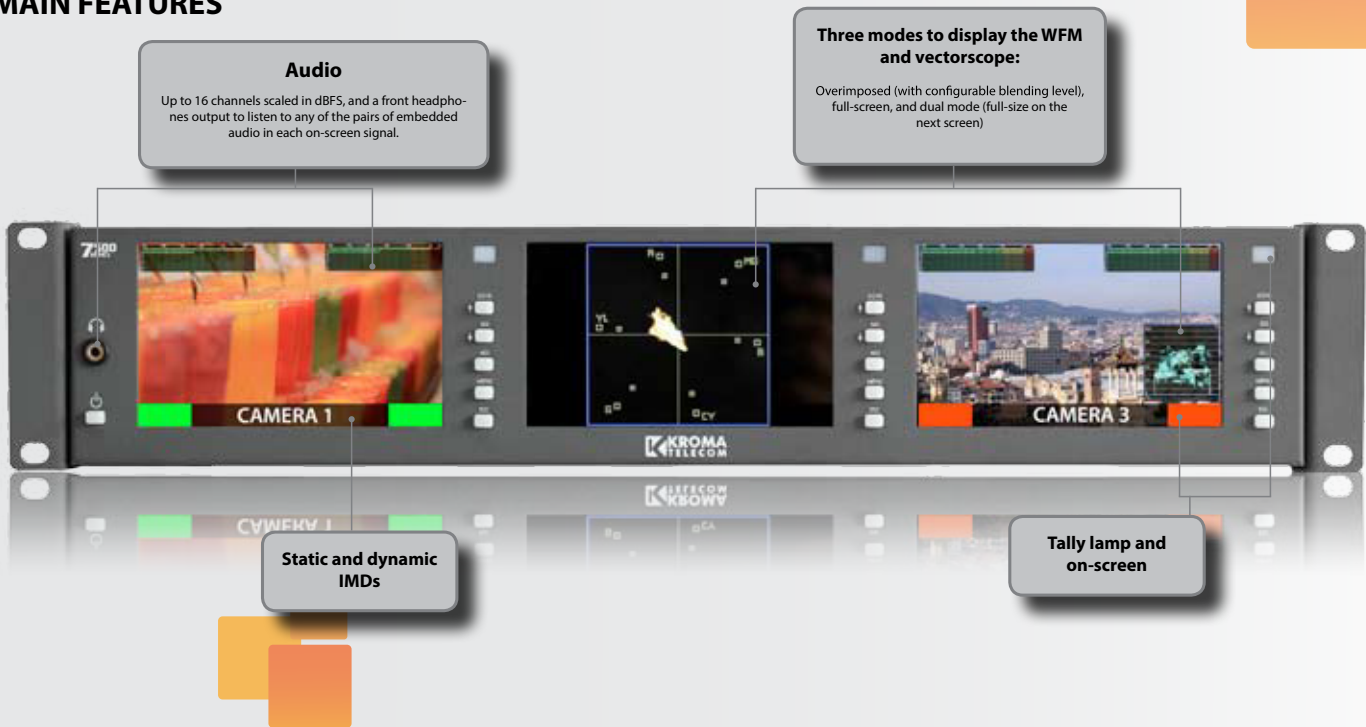
IPS (In-Plane Switching) technology improves viewing angles and colour reproduction, while LED backlight features better uniformity and lowers consumption.

Markers and safety area function have been greatly improved. Including new markers, i.g. cinema formats, they are compatible with the rest of on-screen functions, and the colour, width and blending levels are now configurable.

Markers: 15:9/14:9/13:9/4:3/16:9/1.85:1/1.896:1/21:9/2.35:1/2.39:1
Safety area: 80%, 88%, 90%, 93%



MAIN FEATURES



LM7500 SERIES
Preview monitors

LM7500 SPECIFICATIONS

Model #	LM7509	LM7507	LM7505	LM7504
Panel LCD (piece)	2	2	3	4
Screen	9" (16:9 native)	7" (16:9 native)	5" (16:9 native)	4" (16:9 native)
Resolution	1280x768	800x480	800x480	800x480
Active Area	195x113.4 mm	152.4x91.44 mm	108x64.8 mm	95.04x53.85 mm
Viewing angle	178° H/V	160° H/V	170° H/V	170° H/V
MTTF	50,000 Hours	50,000 Hours	50,000 Hours	50,000 Hours
Brightness	350 cd/m ²	400 cd/m ²	300 cd/m ²	300 cd/m ²
Contrast	900:1	500:1	600:1	600:1
Backlight	LED	LED	LED	LED
Inputs (per screen)				
Composite	2xBNC or 1xBNC (configurable by menu) PAL/NTSC/SECAM			
SD/HD-SDI/3G	2xBNC (models -A11 and -A11G2) or 1xBNC (models -A11G1) 576i@50, 480i@60 720p(60/59.94/50) 1080p(30/29.97/25/24/23.98), 1080iF(24/23.98), 1080i(60/59.94/50) 1035i(60/59.94) 1080p(60/50) (models -A11G1 and -A11G2)			
Audio	SDI embedded audio			
In-monitor display	RJ45 Connector			
Remote control	RS-485 via RJ-45 connector			
Tally	SUB-D9 Connector (contact closure and voltage) RJ-45 Connector (serial protocol: TSL 3.1)			
LTC/VITC (ATC)	SDI embedded (RP-188 and UIT-R BT-1366)			
Service	USB Type B			
Outputs				
Composite (per screen)	1xBNC or none (configurable by menu)			
SD/HD-SDI/3G (per screen)	1xBNC active loop, as on-screen signal Mini-jack front connector (3.5mm) On screen bars			
Audio	RJ45 Connector			
In-monitor display	On screen Lamp RJ45 Connector			
Tally				
General				
Dimensions	175mm x 440mm x 70mm	126mm x 440mm x 70mm	84mm x 440mm x 70mm	84mm x 440mm x 70mm
Rack units	4UR	3UR	2UR	2RU
Weight	3.5Kg	2.5Kg	2Kg	2Kg
Power	External PSU100-240 VAC			
Power Consumption	42W	25W	25W	24W
Ordering info	LM750xA11 (x: 4, 5, 7 or 9): 2 PAL or 1 PAL + loop (configurable by menu) + 2xSD/HD-SDI with one active loop-through LM750xA11G1 (x: 4, 5, 7 or 9): 2 PAL or 1 PAL + loop (configurable by menu) + 1xSD/HD/3G-SDI with one active loop-through LM750xA11G2 (x: 4, 5, 7 or 9): 2 PAL or 1 PAL + loop (configurable by menu) + 2xSD/HD/3G-SDI with one active loop-through			

Specs may change without prior notice

AEQ - KROMA
C/ Margarita Salas Nº24 - Parque Científico Leganés Tecnológico - 28919 Leganés(Madrid) - email: sales@aeq.es · www.aeq.es · www.aeq.eu
AEQ - KROMA designs and manufactures 100% in Spain

CAT.LM7500.19.11